



V2 CITY

RESIDENCES
EGALEO

The information contained in this presentation is proprietary and confidential. No part of this presentation may be reproduced or transmitted in any form or by any means without prior written permission. You may not alter or remove any trademark copyright or other notice from this presentation. It is possible that some information has changed since the creation of this presentation. We bear no responsibility or liability for any errors or omissions in the content of this presentation

V²



CITY

RESIDENCES EGALEO

Welcome to V² CITY Residences, our newest residential project in Egaleo, Athens!

Nestled in a verdant location, V² CITY Residences offers a peaceful escape from the city center while still being conveniently located. Developed with quality and comfort in mind V² CITY Residences guarantee to provide a relaxed lifestyle in this rising suburb of Athens.



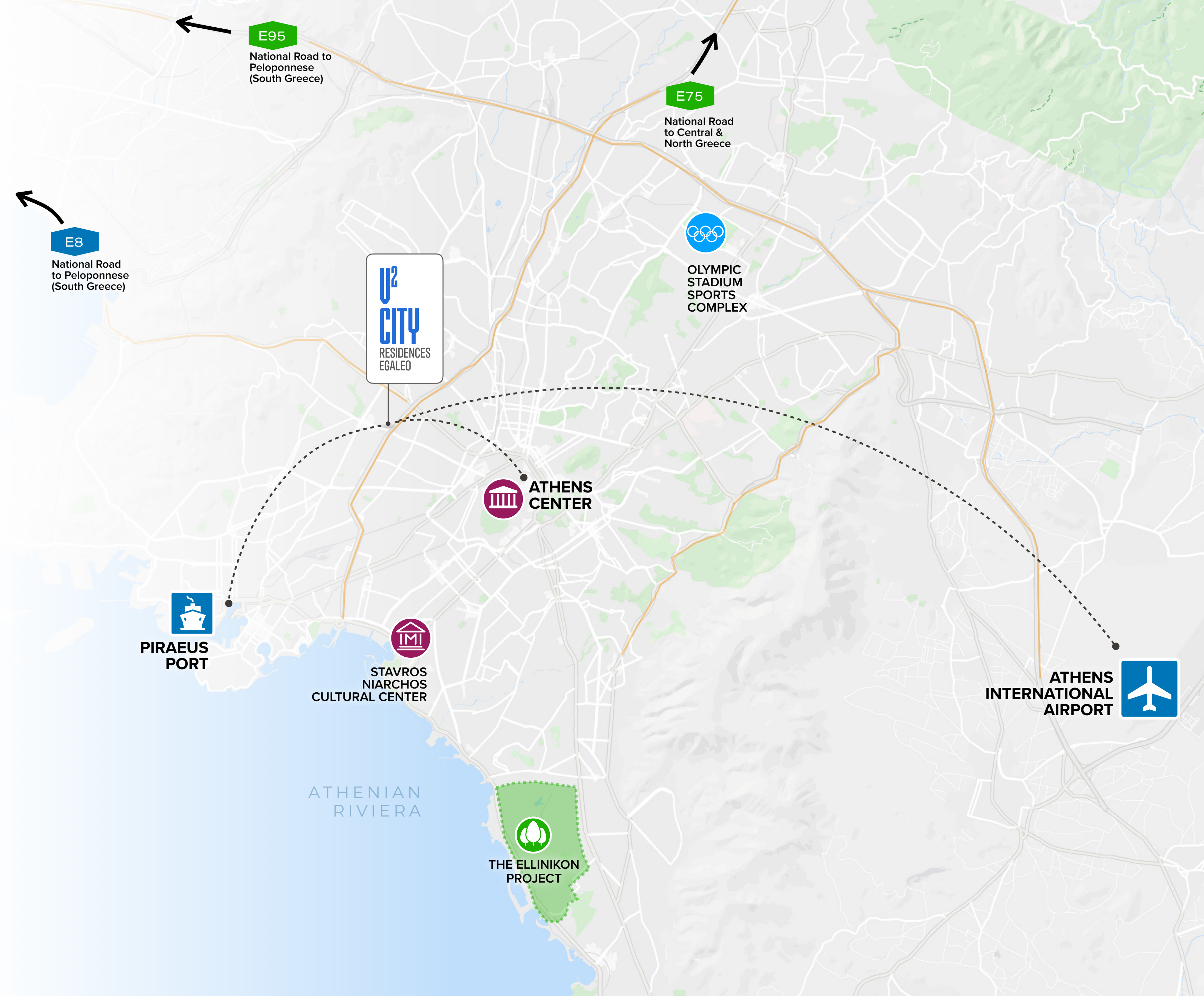


Piraeus

Distance from
Piraeus Port
6.2km

Athens Center
7.5km

Athens International Airport
26km



E95
National Road to
Peloponnese
(South Greece)

E75
National Road
to Central &
North Greece

E8
National Road
to Peloponnese
(South Greece)

**U2
CITY**
RESIDENCES
EGALEO

**OLYMPIC
STADIUM
SPORTS
COMPLEX**

**ATHENS
CENTER**

**PIRAEUS
PORT**

**STAVROS
NIARCHOS
CULTURAL
CENTER**

**ATHENS
INTERNATIONAL
AIRPORT**

**ATHENIAN
RIVIERA**

**THE ELLINIKON
PROJECT**

U²
CITY
RESIDENCES
EGALEO

Egaleo

THE NEW GEM OF WEST ATTICA



6

Units

2 Bedroom Apartments
Loft Options
Large Balconies & Yard Options
All Apartments feature separate
storage rooms

4

Levels

Underground	Storage Rooms
Ground Floor	2 loft-style duplex Apartments, one with Yard
1st Floor	2 Apartments with large Balconies
2nd Floor	2 Apartments with large Balconies
Terrace	Roof Garden with Acropolis View

6

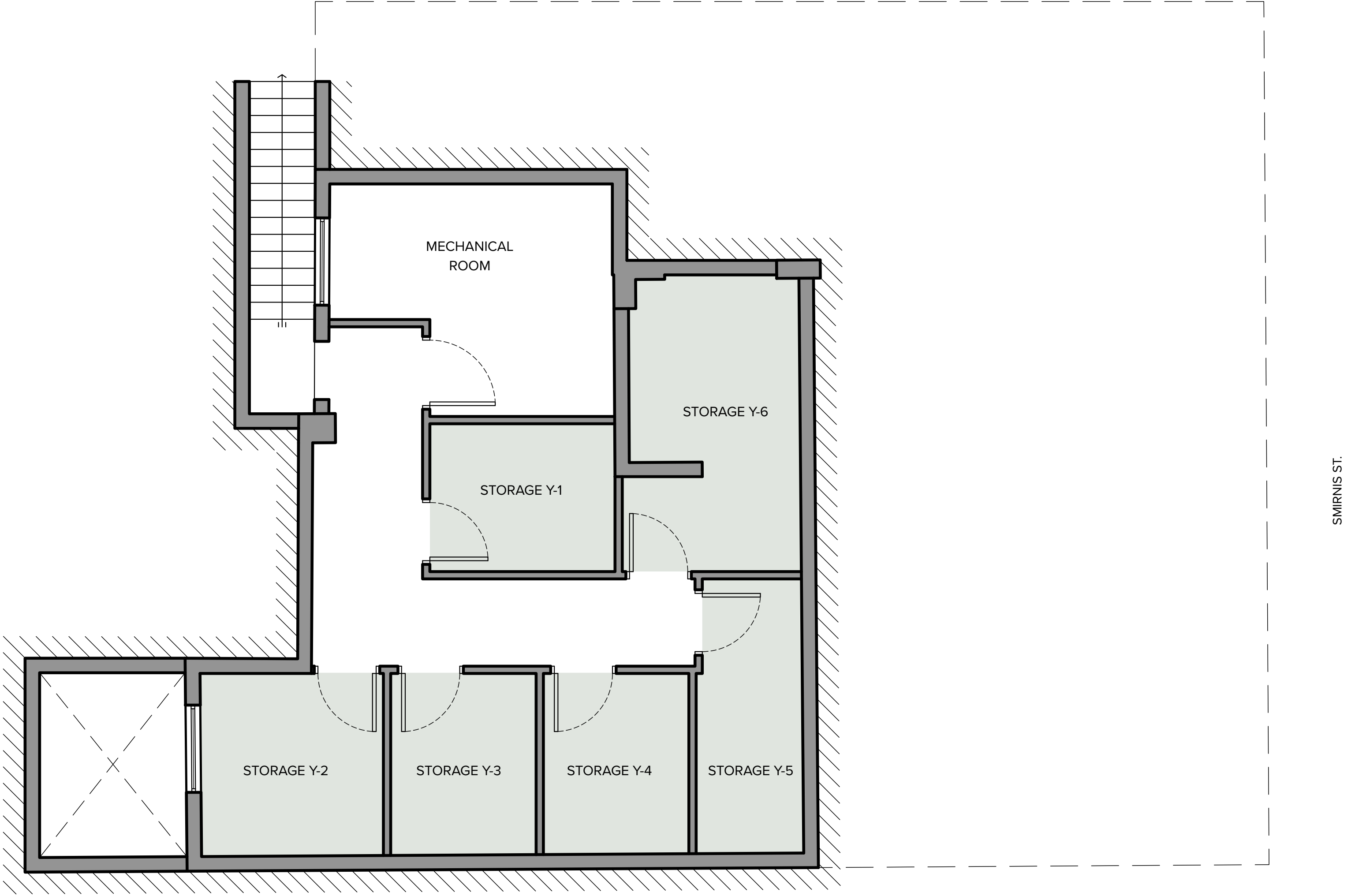
Storage Rooms

Separate Storage rooms for each
Apartment on the underground level

FLOOR	ID	TOTAL AREA SIZE	APARTEMENT AREA SIZE	BALCONIES/ YARD AREA SIZE	BEDROOMS	BATHROOMS	ORIENTATION	BALCONY/ YARD	VIEW	STORAGE
GF	I-1	75m ²	75m ² (61m ² + 14m ²)	-	2	1	South East	-	City View	Y-1
GF	I-2	109m ²	79m ² (50m ² + 29m ²)	30m ²	2	1	North West	Back side Yard	Yard View	Y-2
1F	A-1	93m ²	72m ²	21m ²	2	1	South East & North West	Front & Back Balconies	Open City & Yard Views	Y-3
1F	A-2	90m ²	63m ²	27m ²	2	1	South East & North West	Front & Back Balconies	Open City & Yard Views	Y-4
2F	B-1	93m ²	72m ²	21m ²	2	1	South East & North West	Front & Back Balconies	Acropolis & Yard Views	Y-6
2F	B-2	90m ²	63m ²	27m ²	2	1	South East & North West	Front & Back Balconies	Acropolis & Yard Views	Y-5

Basement

Storage
Y-1, Y-2,
Y-3, Y-4,
Y-5, Y-6



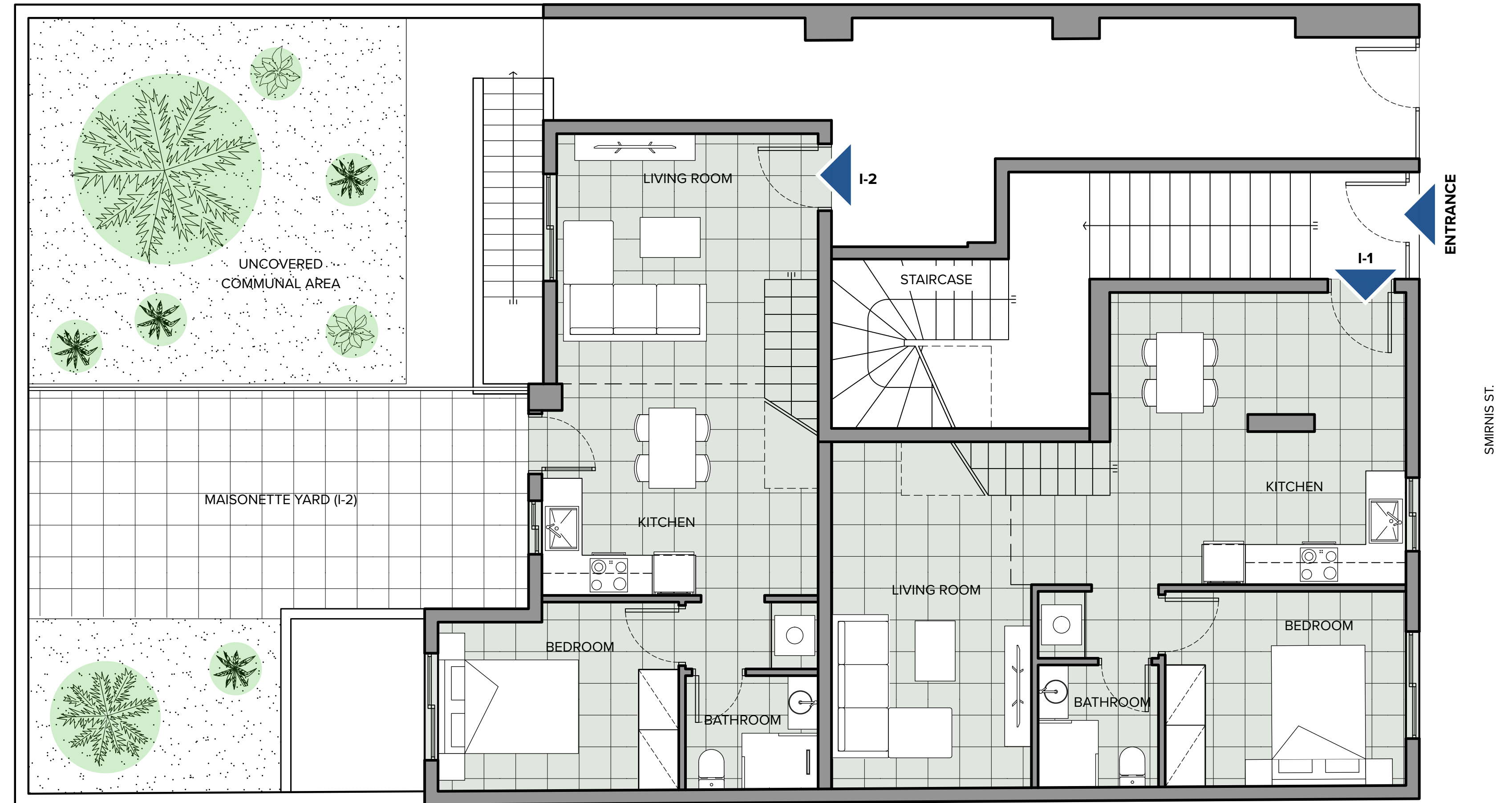
Ground Floor

Maisonette I-1

Bedroom
Living room
Kitchen
Bathroom

Maisonette I-2

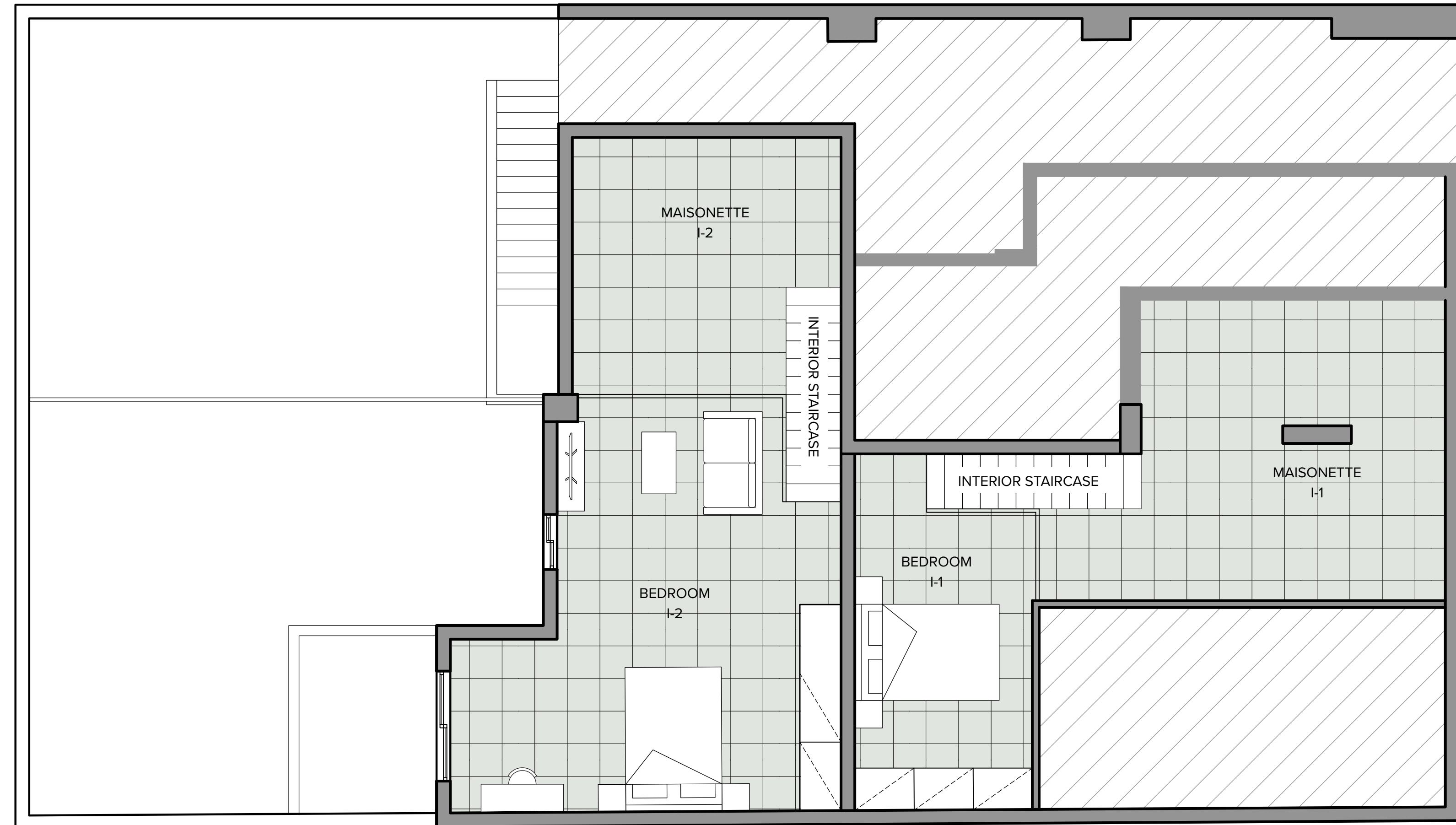
Bedroom
Living room
Kitchen
Bathroom
Yard



Ground Floor

Maisonettes I-1, I-2

Bedroom



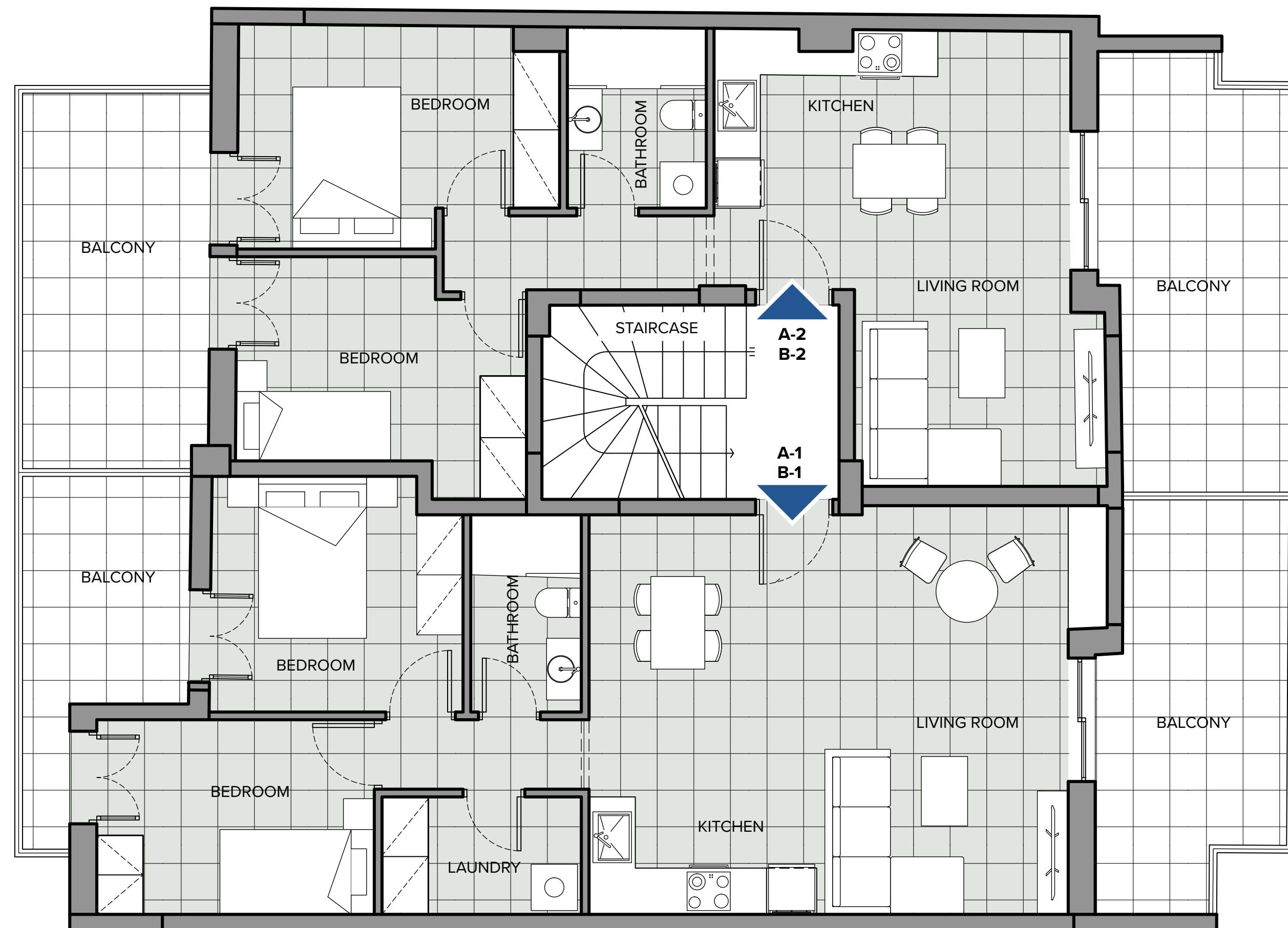
Floors 1-2

Apartments A-1, B-1

Bedrooms
Living room
Kitchen
Bathroom
Balconies
Laundry

Apartments A-2, B-2

Bedrooms
Living room
Kitchen
Bathroom
Balconies

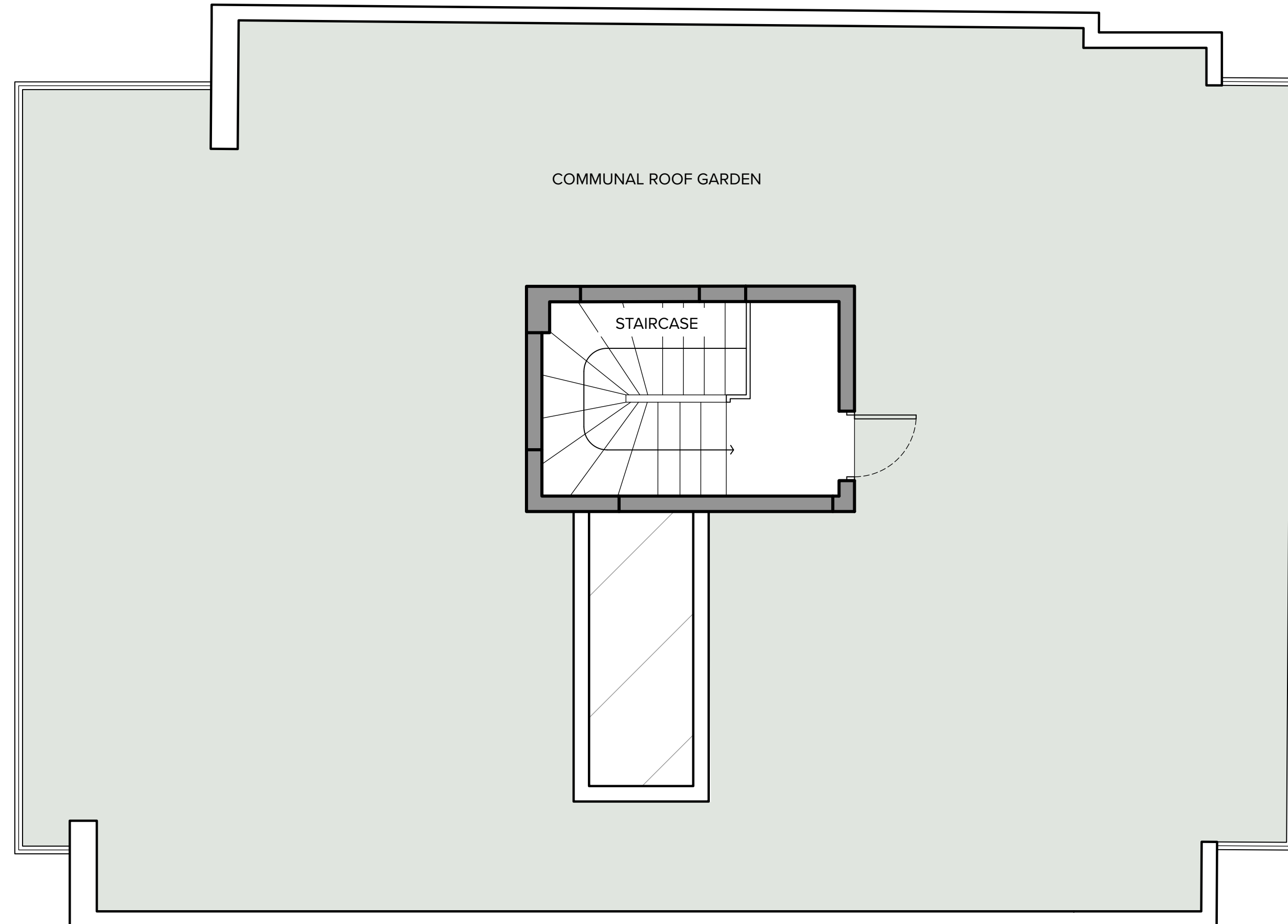


SMIRNIS ST.



Terrace

Communal Roof
Garden



SMIRNIS ST.



CLOSE TO WHAT MATTERS MOST



Egaleo Football Stadium



West Attica Hospital



Shopping Center



Estavromenos Square



Botanical Garden



Baroutadiko Park



Sports Facilities













University of West Attica

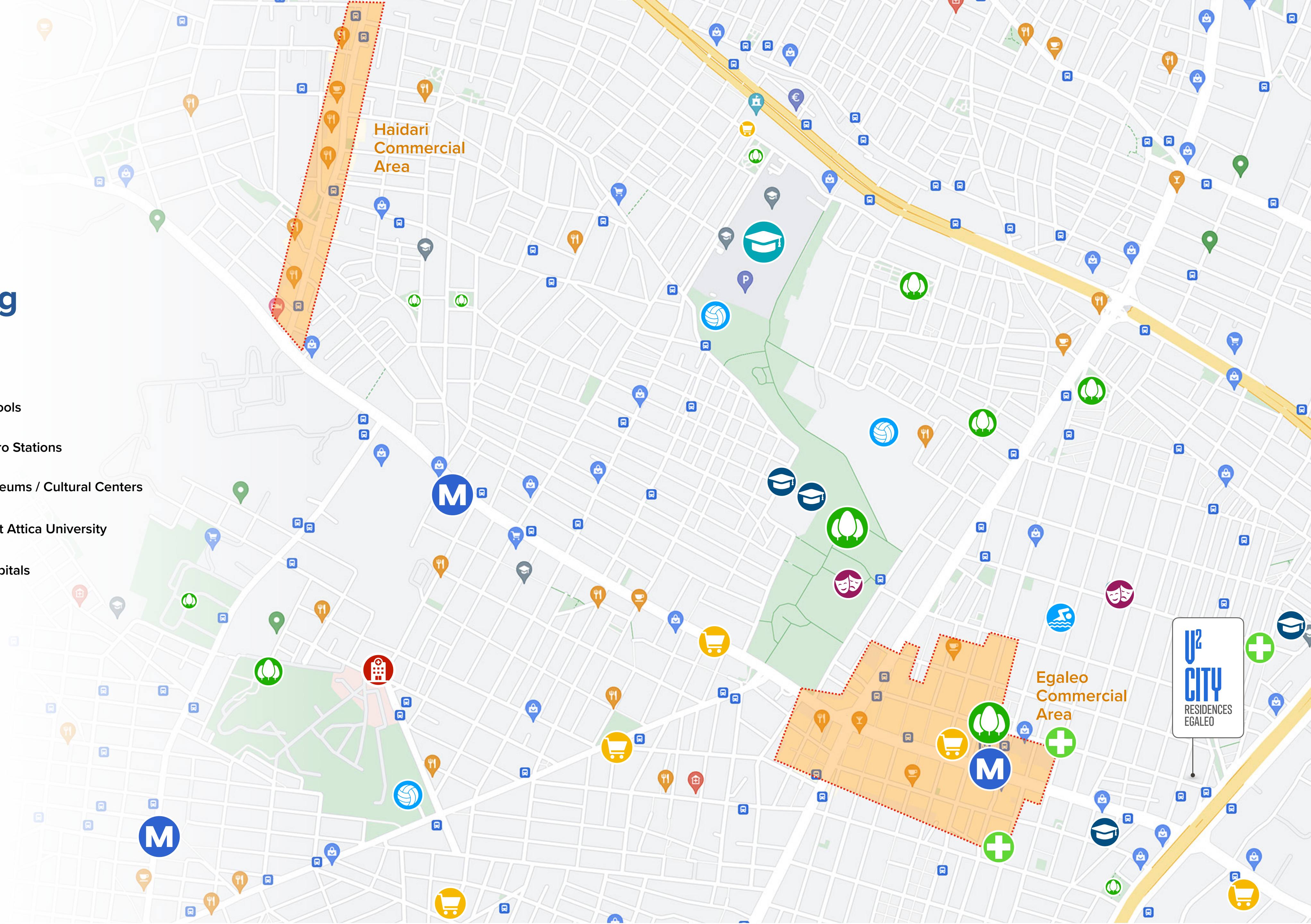


Municipal Pool & Sports Facilities



Surrounding Facilities

- | | | | |
|--------------------|---|---|----------------------------|
| Cinemas / Theaters |  |  | Schools |
| Stadiums |  |  | Metro Stations |
| Super Markets |  |  | Museums / Cultural Centers |
| Pharmacies |  |  | West Attica University |
| Sports Center |  |  | Hospitals |





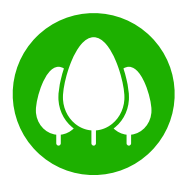
Shopping Center

The center of Egaleo alongside Thivon and Iera Odos avenues, is a vivid shopping center.

150m



U²
CITY
RESIDENCES
EGALEO



Estavronenos Square

Located right next to the metro station, it is the central square of Egaleo, surrounded by cafes & restaurants.

450m



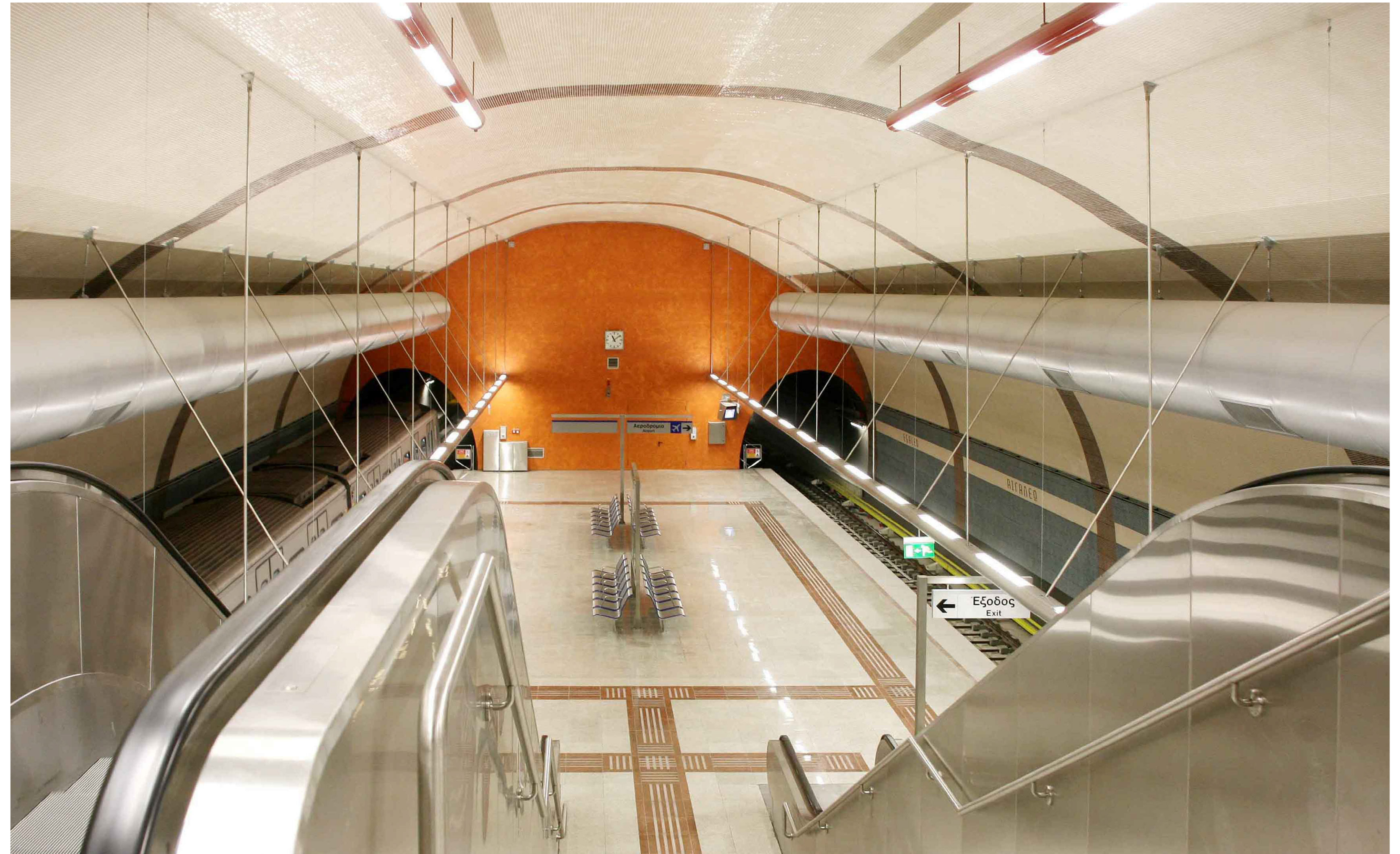
U²
CITY
RESIDENCES
EGALEO



Metro station

“Egaleo”

450m



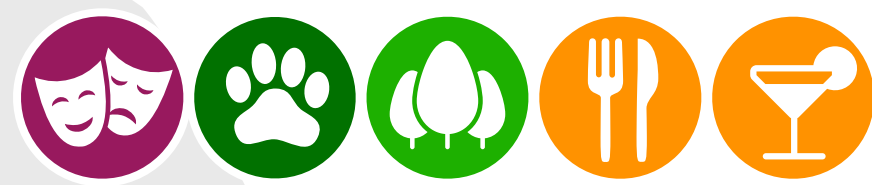


Municipal Pool & Sports Facilities

480m



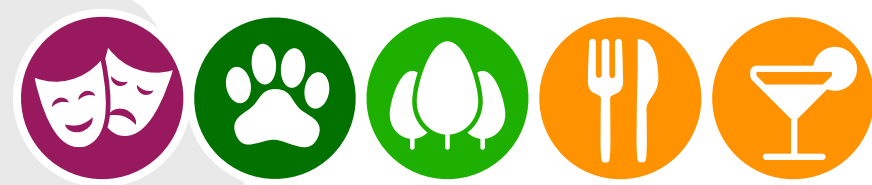
U²
CITY
RESIDENCES
EGALEO



Sports Center

900m



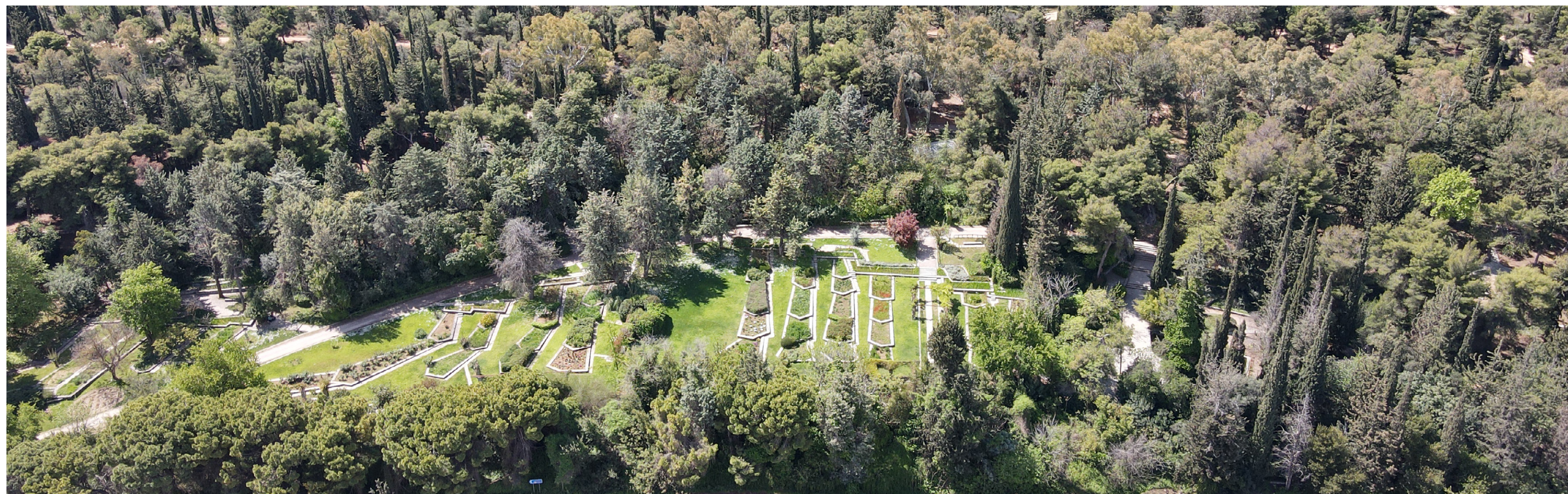
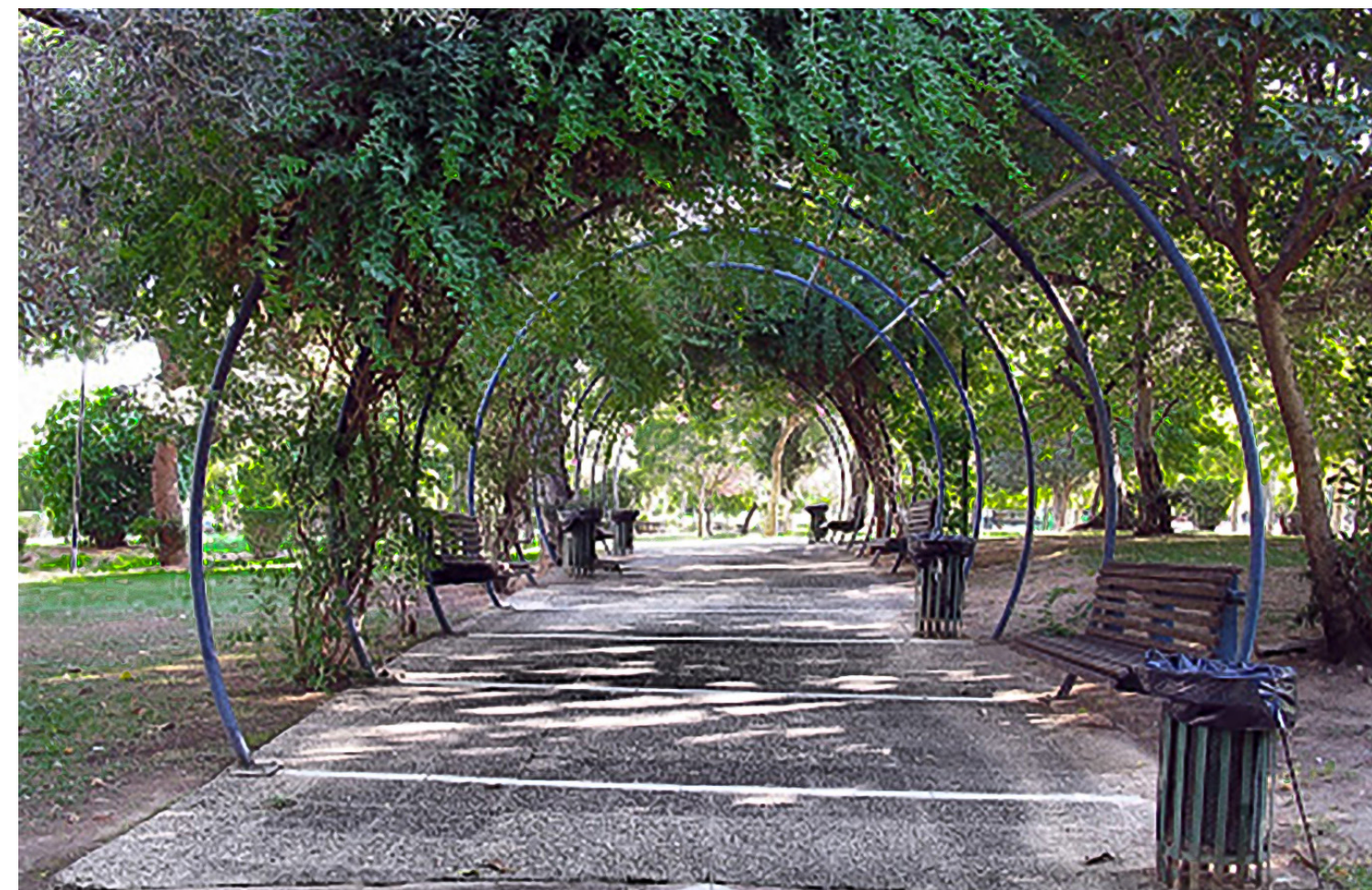


Baroutadiko Park

The biggest park in Egaleo, full of activities to spent time with your family and pets.

You can enjoy your coffee in nature at the coffee place by day, and watch cultural shows at the open theater by night.

900m



U²
CITY
RESIDENCES
EGALEO



Egaleo Football Stadium

1km



U²
CITY
RESIDENCES
EGALEO



IKEA

<https://www.ikea.gr/en/stores/ikea-kifissos/>

1.3km





**University of
West Attica**

<https://www.uniwa.gr/>

1.5km





River West

Located right next to IKEA, a popular destination for shopping and recreation.

<https://www.riverwest.gr>

1.4km





West Attica

Hospital

1.9km



U²
CITY
RESIDENCES
EGALEO



Allou! Fun Park

<https://www.allou.gr/>

2.3km



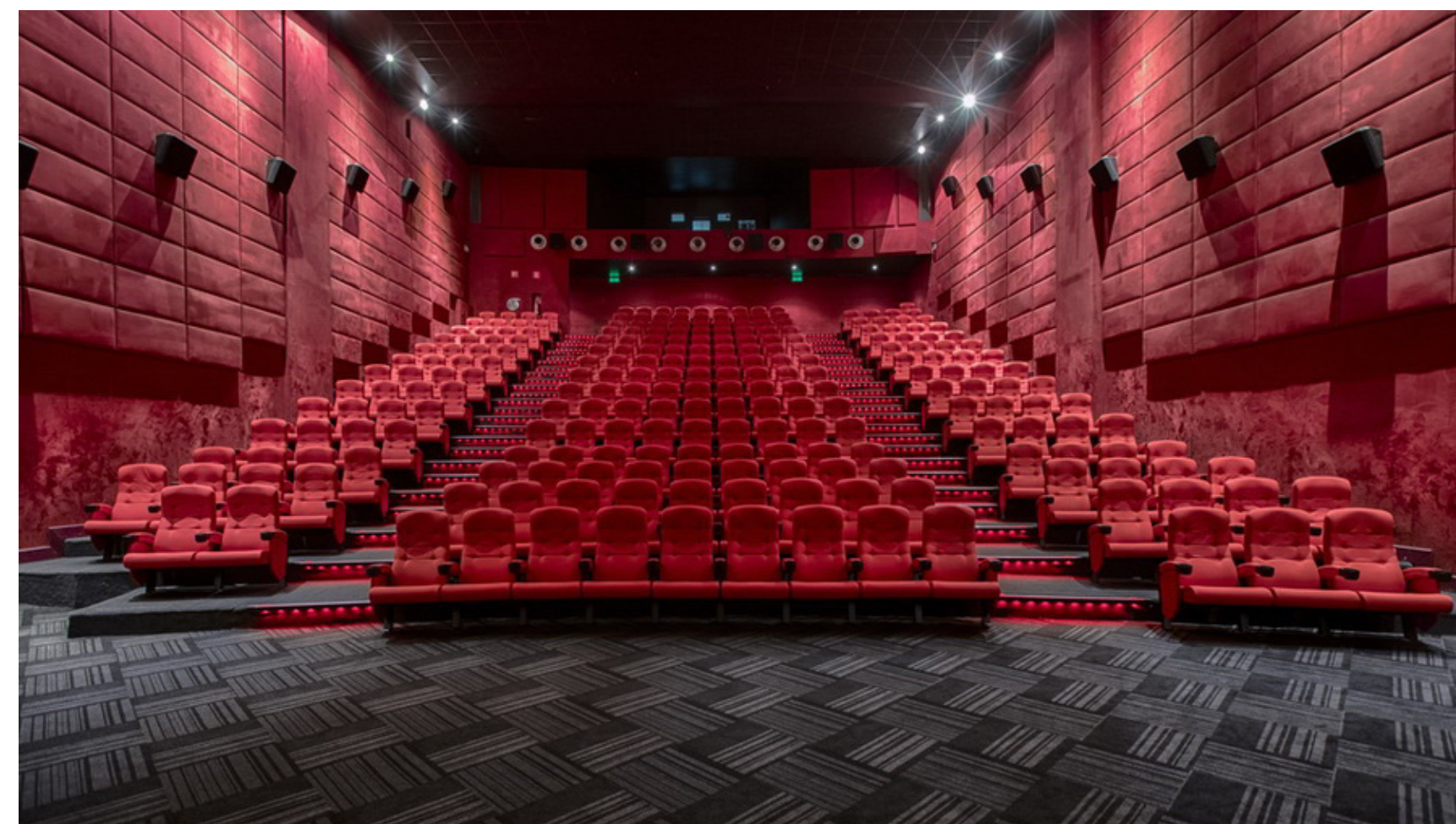


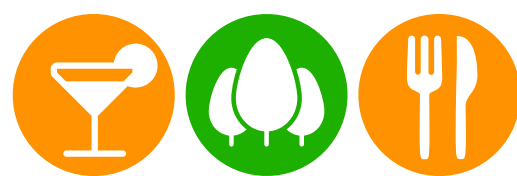
Village Park Shopping Mall

A landscaped complex with a shopping mall, 21-screen multiplex, play, skating & tennis area and a laser tag arena.

<https://villageshopping.gr>

2.4km



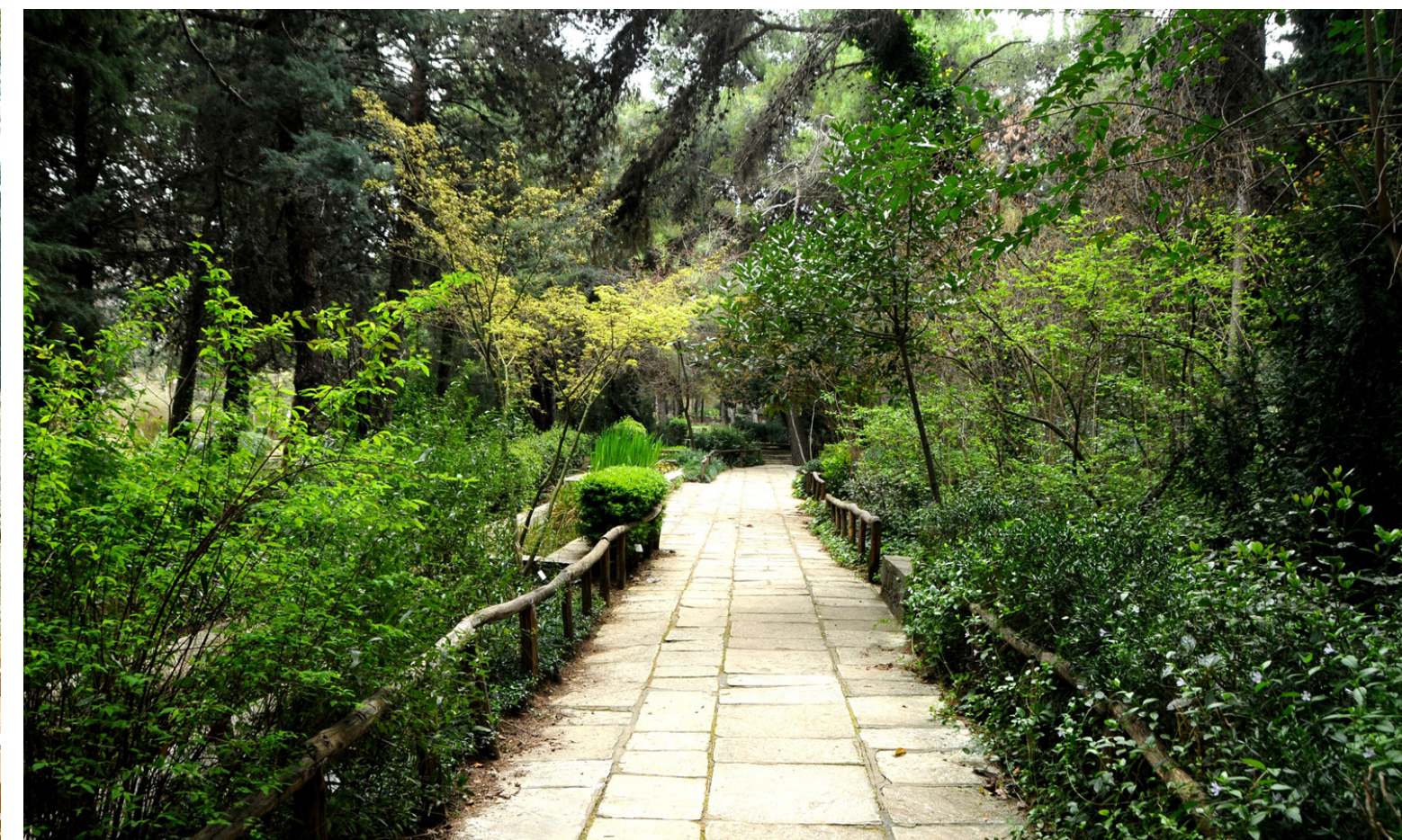


Diomidous Botanical Garden

With only a ticket away, you can enjoy the magic of nature at this beautiful botanical garden park.

<https://diomedes-bg.gr/>

4.4km





OUR UPSCALE RESIDENTIAL PROJECTS
IN ATHENS' MOST PRESTIGIOUS LOCATIONS





Our Expertise, Your Guarantee!

All our residential projects have one thing in common:
Quality!

We pick the best most prestigious and convenient
locations mainly in the
southeastern part of Athens, close to the beach and main
city attractions.

We build or renovate homes for the discriminating
investor, targeting maximum return. We have developed a
unique aesthetic that is perfectly suited to our audience,
thus providing solutions that are comprehensive, sensible,
attractive and commercially appealing.



Photo: PASADENA Residences in Voula, Athens

Quality comes as standard!

GENERAL SPECIFICATIONS

Security door with 18-point lock

Double lined laminated interior doors

Granite tiled floors of Italian or Spanish origin

Laminated oak wood category ac4-ac5 (depending on the decoration)

Ecologic anti-mould painting





Every detail counts!

KITCHENS

Bakelite or high gloss kitchen cabinets
Stainless steel sink with german origin faucet
Carbon filtered cooker hood

BATHROOMS

Italian origin porcelain lavatory and washbasin
Shower and washbasin faucets of German origin
8pm Shower security glass
Bakelite or high gloss washbasin base cabinet
Inox bath accessories



Photos:
SANTA BARBARA Residences,
in Nea Smirni, Athens



Our Expertise Your Guarantee!

COMPLETED RESIDENTIAL PROJECTS



NAGIA Residences

PALAIIO FALIRO

Nagia Residences are located in Palaio Faliro overlooking the sea and close to one of the nicest urban redevelopment projects in Athens, the Floisvos Marina and surrounding areas.

Nagia Residences consist of 7 apartments and a ground floor store,
from 75m² to a 120m² maisonette.



Our Expertise
Your Guarantee!

COMPLETED RESIDENTIAL PROJECTS



PASADENA Residences

VOULA

Located in Voula, an upscale southern suburb of Athens, close to Glifada's shopping hub and the famous Athenian Riviera beaches.

Pasadena has 7 apartments ranging from 50 to 74m² with large balconies, great views and one of the most prestigious zip codes in Athens.



Our Expertise
Your Guarantee!

COMPLETED RESIDENTIAL PROJECTS



KEY BISCAYNE Residences

PALAIO FALIRO

The Delta of Faliron marks the beginning of the Athens Riviera and the 8 apartments in Key Biscayne Residences mark a new landmark in the area.

Whether you want to go to the beach, or Piraeus or the Acropolis, your starting point in Palaio Faliro is by far the most convenient choice.





Greece has been voted by the most prestigious travel publication as **Most Beautiful country in the world** for 2016 and 2019 while it was ranked 2nd for the years 2017 and 2018.

Invest in Greece

Change Your Life!



Greece
My Residence
Golden Visa Programme

“Greece My Residence”
is the **No.1 Permanent Residency** program in the world
for **5 consecutive years**
(2018-2022).



**One of the strongest
Passports in the world**

The **Greek passport** gives you access to **184 out of 193** countries on the planet, including the United States, placing Greece among the countries with the strongest passports in the world.



V2 CITY

RESIDENCES
EGALEO

The information contained in this presentation is proprietary and confidential. No part of this presentation may be reproduced or transmitted in any form or by any means without prior written permission. You may not alter or remove any trademark copyright or other notice from this presentation. It is possible that some information has changed since the creation of this presentation. We bear no responsibility or liability for any errors or omissions in the content of this presentation